



Doulton House, Chelsea Creek
Fulham SW6

GARTONJONES.COM



Doulton House, Chelsea Creek Fulham, SW6

GARTON JONES.COM

11 Park Street
Chelsea Creek
London
SW6 2FS

Lettings:
+44 (0) 20 7824 7090
paul@gartonjones.com
www.gartonjones.com

£1,400 Per Week

Outstanding furnished 3 bedrooms, 3-bathroom apartment situated within the highly desirable dock side development at Chelsea Creek. This spacious contemporary interior designed apartment is approx. 1356 sq.ft (126 sq.m) consists of a master bedroom with excellent built-in storage and a luxury bathroom, further two double bedrooms and 2 guest bathrooms, spacious well-presented open plan reception with a fully fitted kitchen with integrated appliances and access to the balcony. The property is furnished to a high specification throughout. The development offers a resident's gym & spa, 24-hour concierge & communal landscaped gardens. Chelsea Creek is located a short distance from the amenities of the Kings Road, and moments from Imperial Wharf over ground station which is one stop from both West Brompton station (district line) and Clapham Junction.

12-month minimum term - 6-week deposit required

Council Tax — London Borough of Hammersmith & Fulham Council (band G)

EPC C(75)

Available 6th October 2025

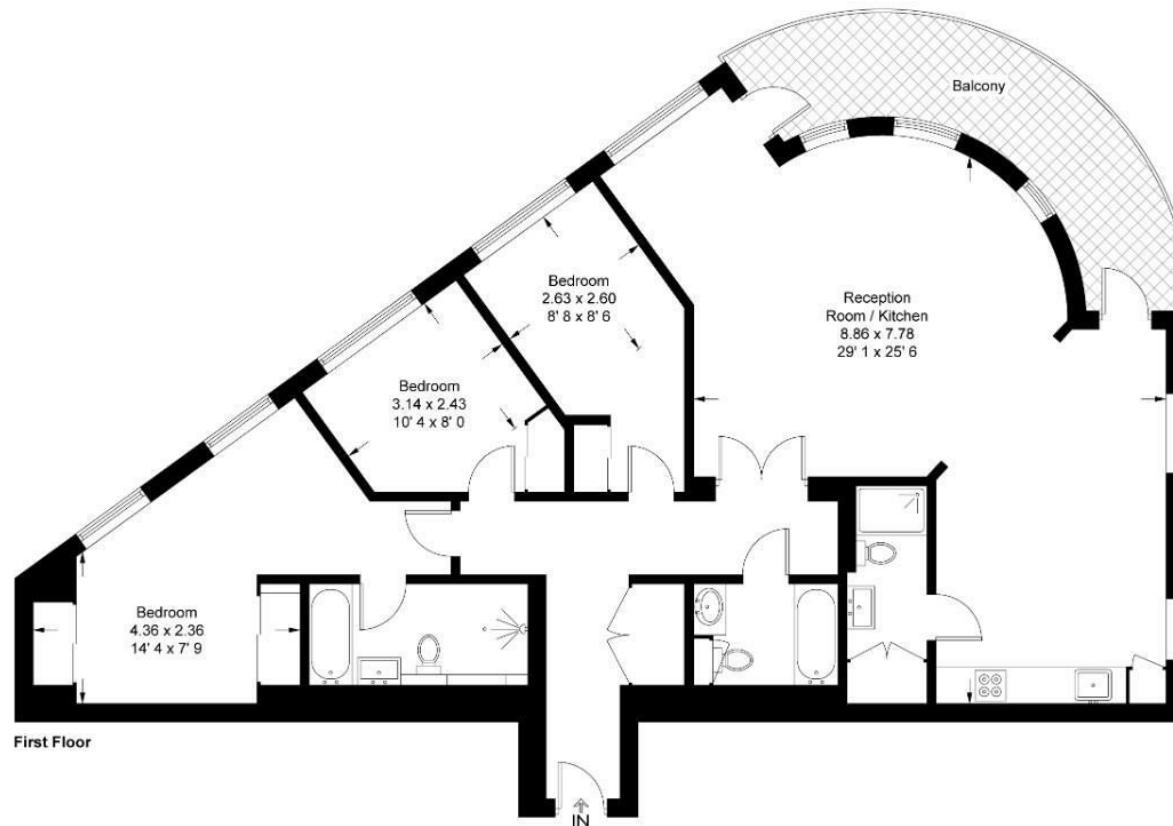
- Three Bedrooms
- Three Bathrooms
- 1382 Sqft (129 Sqm)
- Desirable Dockside Development
- Residents' Gym & Spa
- Balcony
- 24 Hour Concierge
- Fully Furnished
- Mainline Access Via Imperial Wharf
- EPC C (75)



Doulton House

Approximate Gross Internal Area = 1356 sq ft / 126 sq m

GARTON JONES
LONDON



This plan is not to scale and must be used as layout guidance only. All measurements and areas are approximate and should not be relied upon to provide accurate information. This plan must not be relied upon when making property valuations, design considerations or any other such relevant decisions. We accept no responsibility or liability (whether in contract, tort or otherwise) in relation to any loss whatsoever arising from or in connection with any use of this plan or the adequacy, accuracy or completeness of it or any information within it.



